

Particularly tough and precise gauges for general use; they can be used in every field of industry for the measurement of non-aggressive and non-crystallizing fluids.

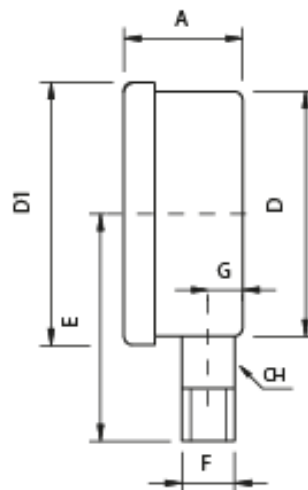
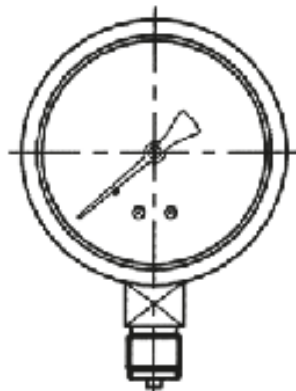


### DESIGN FEATURES

- DIAL SIZE (DS): mm 63
- ACCURACY: Class 1 according to EN837-1
- PRESSURE CONNECTION: brass OT58; thread according to UNI ISO 228/1 G 1/4" A
- ELASTIC ELEMENT: copper alloy with pond soldering
- MOVEMENT: brass
- WINDOW GASKET: nitrile rubber NBR
- DIAL: white aluminium; black scale and graduation according to EN837-1

### TECHNICAL CHARACTERISTICS

- OPERATING PRESSURE:
  - Constant: 75% F.S.V.
  - Changeable: 60% F.S.V.
  - OPERATING TEMPERATURE
- Ambient: -30÷65°C
- Process Fluid: -30÷70°C campo ≤ 40 bar
- OVERPRESSURE: 25% F.S.V.
- THERMAL DRIFT: max 0.3% of span every 10°C of deviation from the reference temperature of 20°C
- DEGREE OF PROTECTION: IP55 according to EN 60529
- LIQUID FILLED: Glycerol 90%
- RANGE: 0/+600 mbar code **BLVG06306 (standard)**
- RANGE: 0/+1000 mbar code **BLVG06310**



CODE	D	D1	D2	D3	D4	Ø	A1	B	CH	E	E1	F	G	G1	H	Ø Panel drilling	Weight
BLVG06306	62	68	75	85	3,5	29	-	8	14	57	57	1/4"	10	-	-	66	0,15

Dimensions =mm

[info@createflow.cz](mailto:info@createflow.cz)  
[www.createflow.cz](http://www.createflow.cz)  
**Your Choice,**  
**Our Commitment**

Create Flow s.r.o.

tel: 00420 722 712 652

Technical data can be changed without notice.